

nun+ 3.0 ver.  
(IR Focus guide)

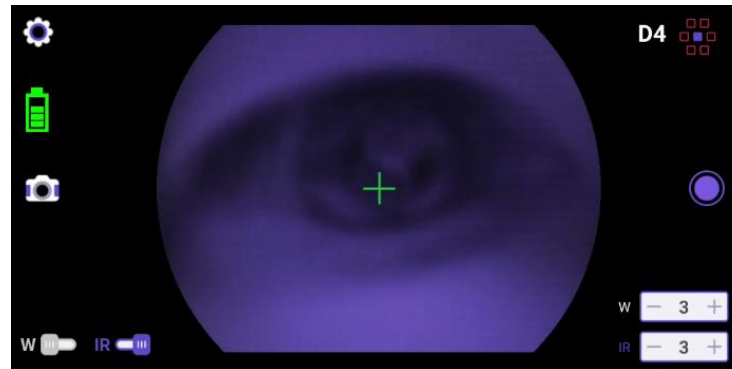
2021. 10. 29.



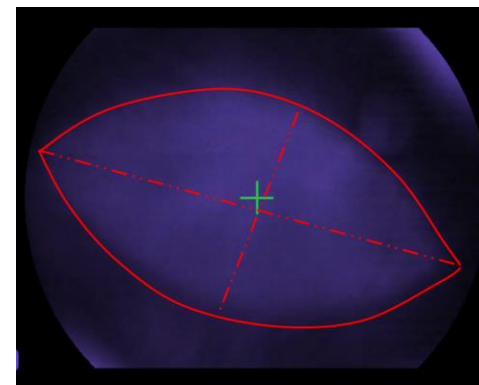
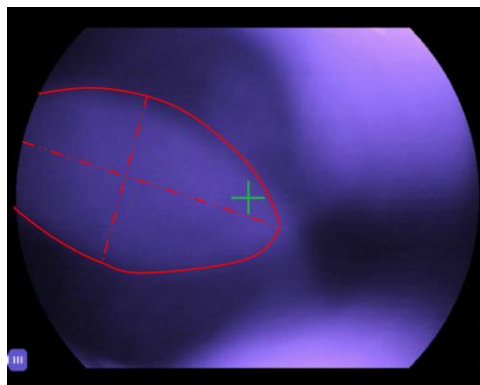
# IR Focus guide

Confidential

- The green '+' sign will be placed in the center of a preview screen.



- When you approach the device to the eye, you may find the area where the top and bottom IR lights overlap. (red circled area, but the red line is not displayed in the preview screen.) Move the device slightly so that the red circled area place on the center of the preview screen. And then, approach the device to the eye until 2 IR lights overlap completely so that the retina image full.



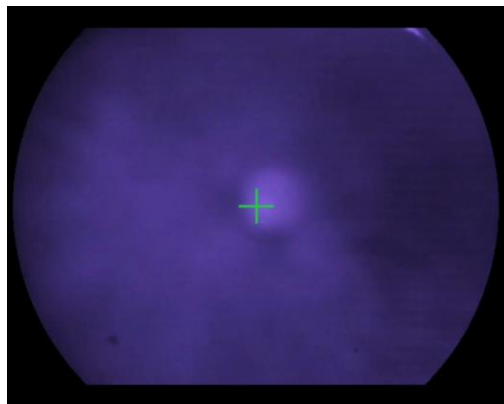
# IR Focus guide

Confidential

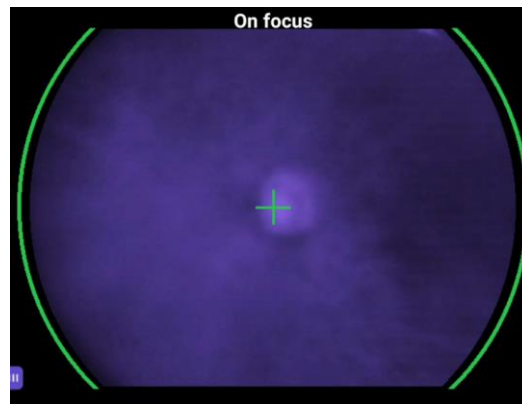
- Adjust the focus of IR image with the diopter wheel.



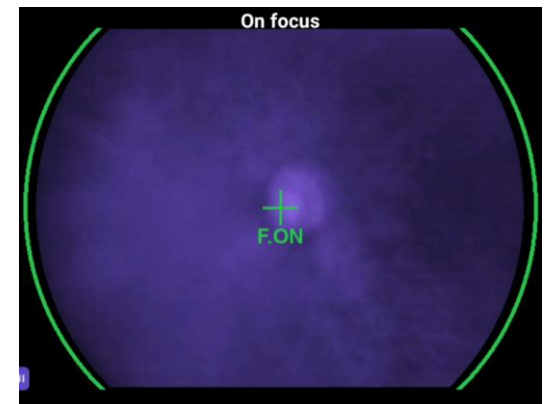
- The following three cases will occur in sequence when adjusting focus of IR image with diopter wheel. When '**F.ON**' sign appears, then press the shooting button. But, for a clearer & better image, the further fine-tuning of diopter wheel is recommended even after '**F.ON**' sign appears.



[Out of focus]



[Optic disk detected]



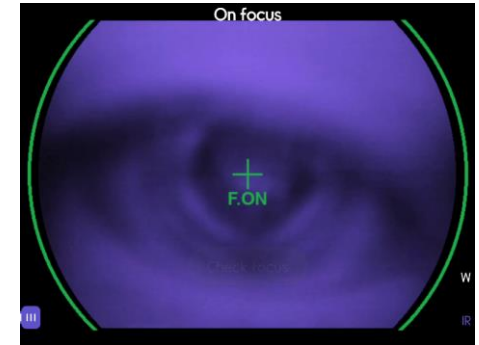
[Well focused]

# IR Focus guide

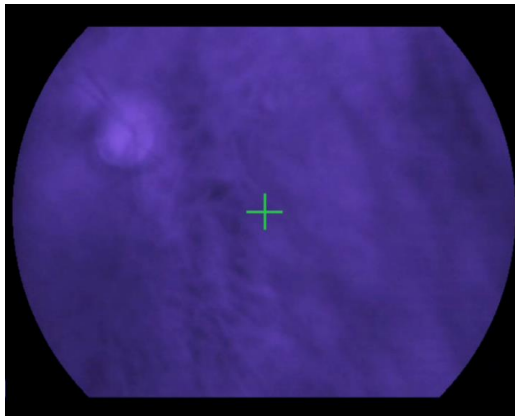
**Confidential**

- Note : exceptional cases

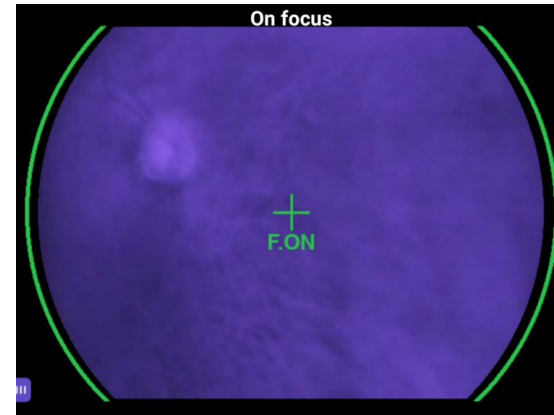
- Ignore 'F.ON' that appears even though the retina is not detected yet, which sometimes can occur while approaching the device to the retina.



- Sometimes, the guide may not work properly due to some reasons such as the patient's eyelashes, dust on the lens, or some other reasons.



[F.ON function is not working because eyelashes exposed]



[F.ON is working with clear preview]